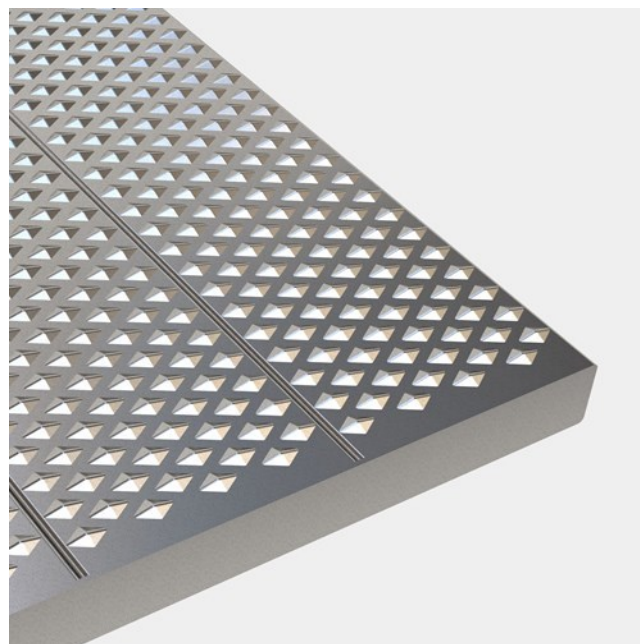




Plank grating E

Stainless steel

Optimo E Plank Gratings are identified by the raised surface without holes. Type E is used where no drainage required. E is a strong and slip resistant alternative to Durbar chequer plate, the planks are welded together to form modules to suit your support arrangement, subject to your clear span and loading consideration.



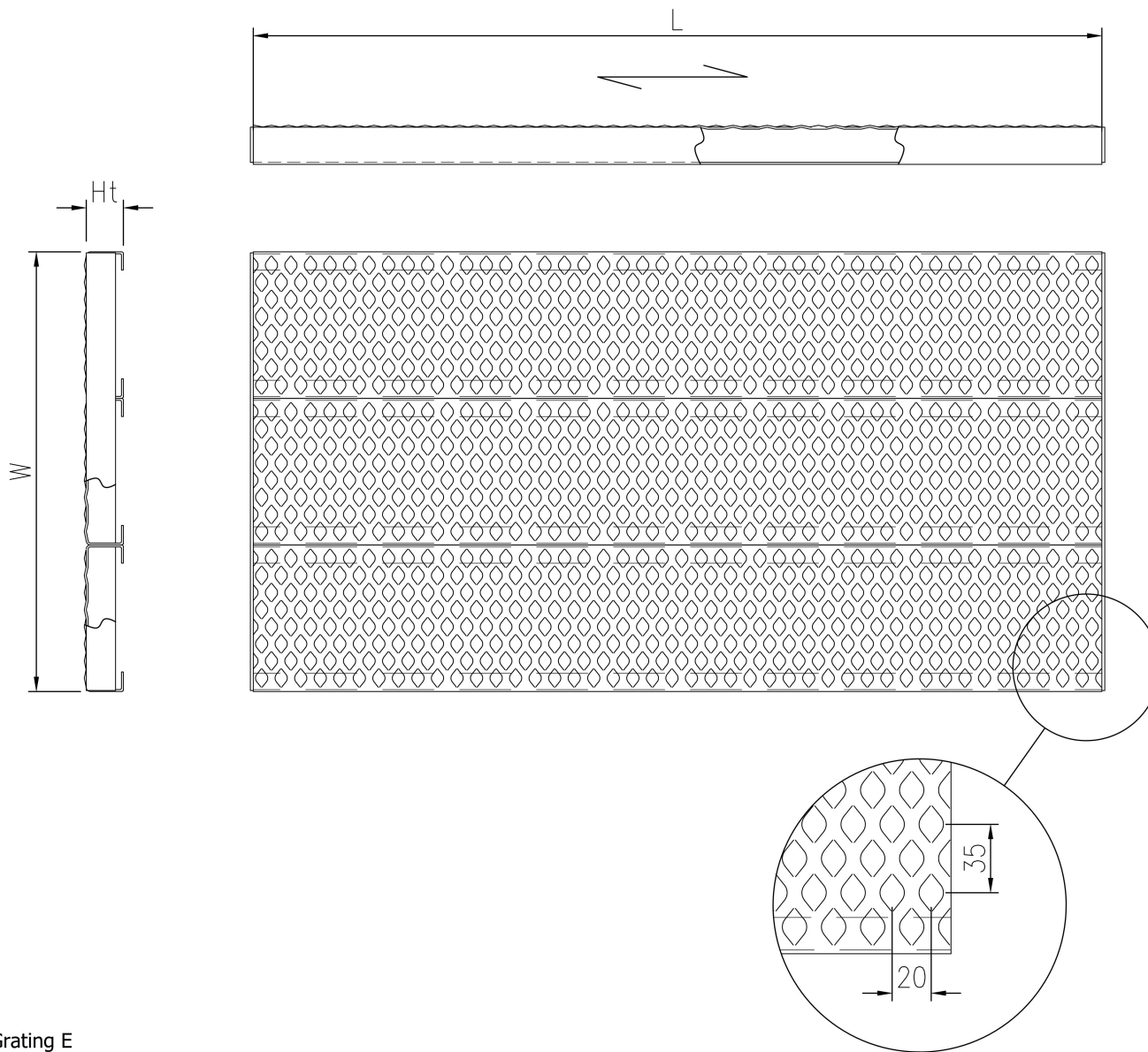
Specifications

| | |
|--------------------|---|
| Displacement space | V10 acc. to DIN 51130 |
| Heel proof | |
| Closed surface | |
| Slip resistance | R9 = 10° > slope > 6° acc. to DIN 51130 |
| Free area | ~0 % |
| C-C grid | 35 x 20 mm |
| Ball proof | 15 mm in accordance with EN ISO 14122-2 20 mm in accordance with EN ISO 14122-2 35 mm in accordance with EN ISO 14122-2 |

Other materials available

Steel

Aluminium 3005-16 H66



PcP Product name
OPTIMO Plank Grating E