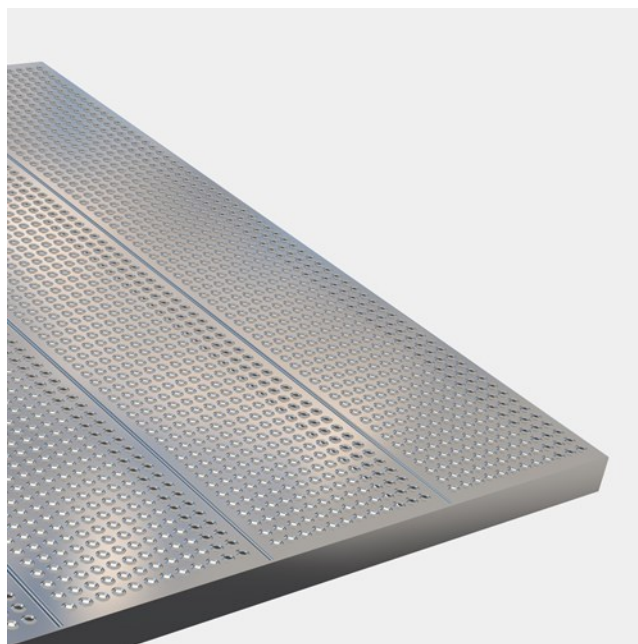




Plank grating SPS

Stainless steel

Safety gratings Optimo Type SPS are custom built for indoor and outdoor swimming baths. Slip resistance and drainage is well balanced, so that Type SPS is comfortable to walk on. Type SPS (Swimming Pool Specification) is a bespoke system that can be tailor made in either flat sheet form or as agreed plank widths for forming treads and walking areas. Manufactured predominately in Stainless Steel, this product is of particular use in wet areas. Type SPS has a smooth "rounded" surface which allows access to be made with bare feet such as swimming pool areas or similar.



Specifications

Heel proof	
Slip resistance	C acc. to DIN 51097
Free area	9 %
Upward grip holes	dia. 5
C-C grid	15 x 15 mm
Ball proof	15 mm in accordance with EN ISO 14122-2 20 mm in accordance with EN ISO 14122-2 35 mm in accordance with EN ISO 14122-2

Related products

Ladder rung SPS

Other materials available

Steel

Aluminium

