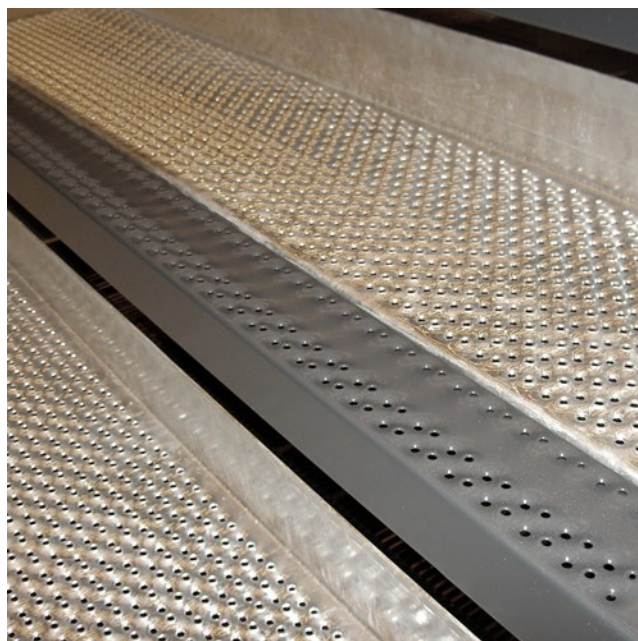




Tread MR 05

Steel 240 YP

Optimo 05M Bespoke Stair tread available with or without a removable nosing & riser plate. Manufactured from the O5 plank pattern which benefits from 5mm dia raised/depressed holes providing a stiletto proof, non-slip surface (PTV79); ideal for public & institutional type buildings. Available in Carbon Steel 240Yp material with Galvanised finish to BS EN 1461: 2009 and Polyester powder coated nosing's to BS EN 15773:2009. Stair tread loadings designed in accordance with BS EN 1991-1-1: 2002.



Specifications

Heel proof	
Designed in accordance with	BS EN 1991-1-1: 2002
Contrasting nosing compliance to	BS8300 / Part M
	550 °C

Suitable application areas

Straight staircases

Featured cases

Public stairs, landings and walkways - HMS Victory - Portsmouth, England

Public stairs, landings and walkways - HMS Gallipoli - Portsmouth, England

Related products

Plank 05

Plank Grating 05

Standard dimensions

Length (mm)	Width (mm)	Height (mm)	Thickness (mm)	Item No.
1000	315	58	2	EO5MR1155-1
1000	315	58	2	EO5MR1160-1
1000	315	58	2	EO5MR1165-1
1100	315	58	2	EO5MR1170-1
1200	315	58	2	EO5MR1175-1
1200	315	58	2	EO5MR1180-1
1500	315	58	2	EO5MR1185-1
1500	315	58	2	EO5MR1190-1
900	315	58	2	EO5MR1195-1
900	315	58	2	EO5MR1200-1