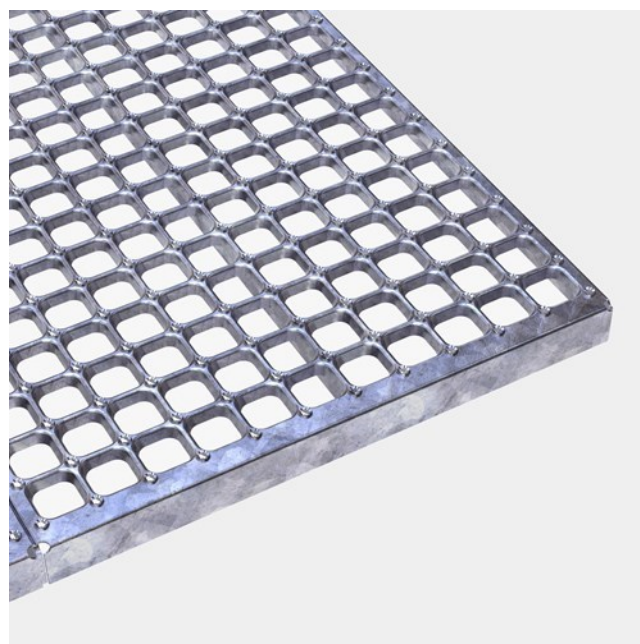




Plank grating Oyster

Steel 240 YP

Punched hole mesh gratings CUBE® has a high strength-to-weight ratio which means that strength is maintained while weight is reduced. The greater the span, the lower is the weight – in relation to pressure-locked mesh gratings. The CUBE® grating can be produced in three design variants depending on how much slip resistance is needed. CUBE® mesh gratings are recommended in most constructions and industries where high air- or liquid flow are required.



Specifications

| | |
|-------------------------|--|
| Displacement space | V10 acc. to DIN 51130 |
| PTV guidelines | 36+ Low Slip Potential |
| Dry PTV average | 104 |
| Wet PTV average | 70 |
| Slip resistance | R13 = slope >35° acc. to DIN 51130 |
| Free area | 50-56 % |
| Upward grip holes | Oyster - serrated dia 6,5 |
| Downward drainage holes | 34x34 mm |
| C-C grid | 43,5 x 43,5 mm |
| Load capacity | 1,5 kN / 200 x 200 mm acc. to EN ISO 14122 |
| Ball proof | 35 mm in accordance with EN ISO 14122-2 |
| | 550 °C |

Suitable application areas

Access Walkways & Maintenance Platforms

Landings

Entrances

Featured cases

Maintenance walkway - Heathrow Park - London, England

Maintenance platforms and stairs - Air BP Jet Fuel Station - Dals-Långed, Sweden

Accessories

Fixing clip, upper part Ma44/CUBE

Fixing clip, lower part

Related products

Plank Oyster

Fixing clip, upper part Ma44/CUBE

Fixing clip, lower part

Plank grating Plain

Plank grating Dimple

Plank grating Round

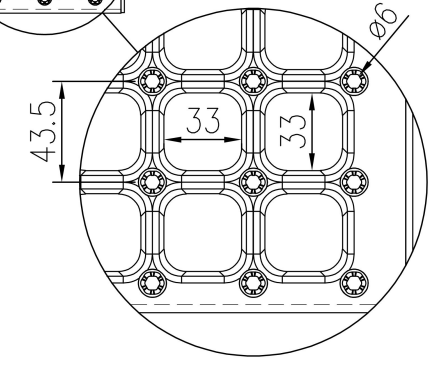
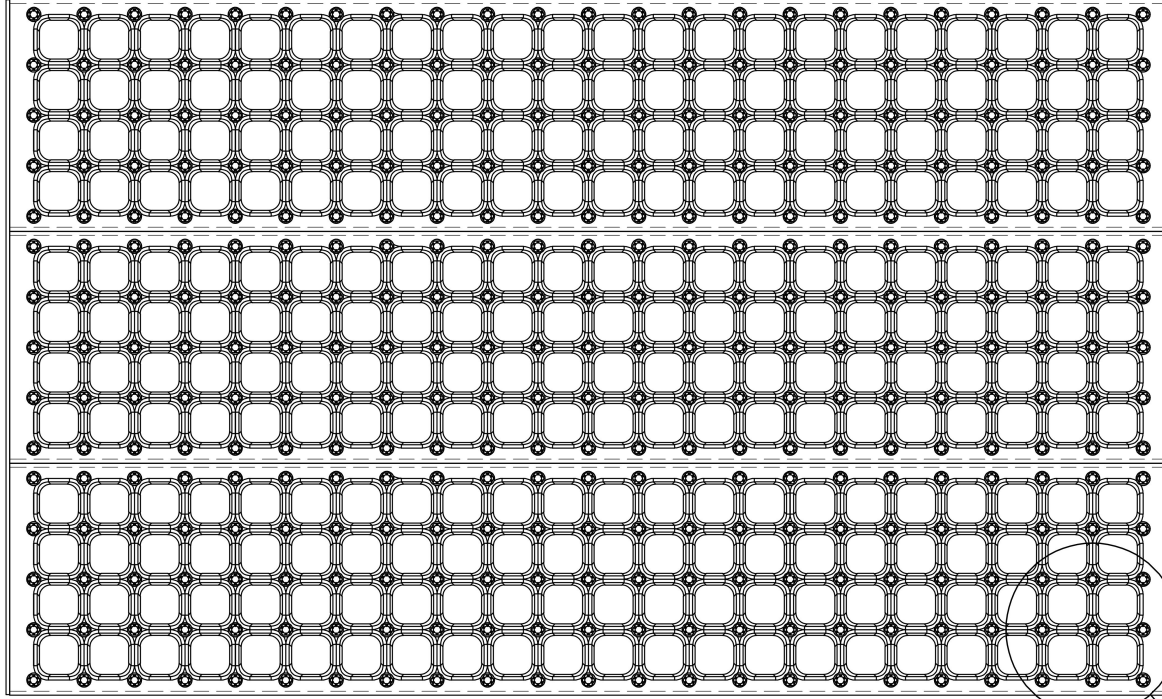
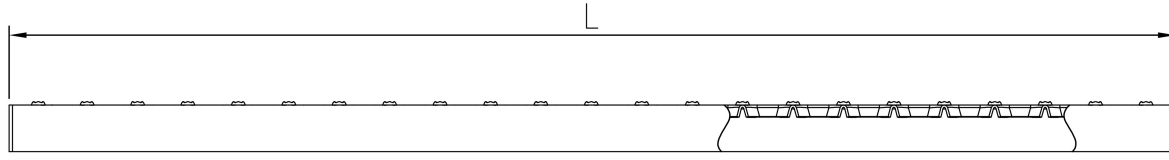
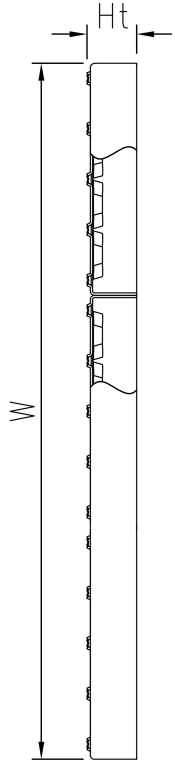
Tread Oyster

Standard dimensions

| Length (mm) | Width (mm) | Height (mm) | Mat. thickness (mm) | Finish | Availability | Item number |
|-------------|------------|-------------|---------------------|--------------------|--------------|-------------|
| 600 | 1000 | 42 | 2 | Mill finish | On request | F004000100 |
| 600 | 1000 | 42 | 2 | Hot-dip galvanised | On request | F004000101 |
| 800 | 1000 | 42 | 2 | Mill finish | On request | F004010100 |
| 800 | 1000 | 42 | 2 | Hot-dip galvanised | On request | F004010101 |
| 1000 | 1000 | 42 | 2 | Mill finish | On request | F004020100 |
| 1000 | 1000 | 42 | 2 | Hot-dip galvanised | On request | F004020101 |

Other materials available

Stainless steel



PCP Product name
CUBE Plank Grating Oyster