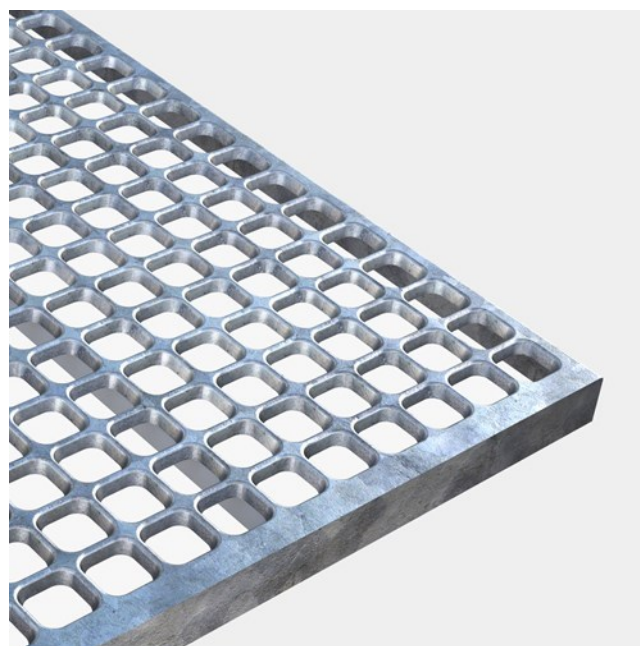




Plank grating Plain

Steel 240 YP

Punched hole mesh gratings CUBE® has a high strength-to-weight ratio which means that strength is maintained while weight is reduced. The greater the span, the lower is the weight – in relation to pressure-locked mesh gratings. The CUBE® grating can be produced in three design variants depending on how much slip resistance is needed. CUBE® mesh gratings are recommended in most constructions and industries where high air- or liquid flow are required.



Specifications

| | |
|-------------------------|----------------------------------|
| Free area | 50-56 % |
| Downward drainage holes | 34x34 mm |
| C-C grid | 43,5 x 43,5 mm |
| Ball proof | 35 mm in accordance with BS 4592 |
| | 550 °C |

Accessories

Fixing Clip, Upper Part MA44/Cube

Fixing Clip, Lower Part

Related products

Fixing Clip, Upper Part MA44/Cube

Fixing Clip, Lower Part

Plank grating Oyster

Plank grating Dimple

Plank grating Round

Other materials available

Stainless steel
