



Tread ACHIL VISUAL 05

Steel 240 YP



Specifications

PTV guidelines	36+ Low Slip Potential
Dry PTV average	96
Wet PTV average	79
Slip resistance	R13 = slope >35° acc. to DIN 51130
Heel proof	
Free area	8-9 %
Upward grip holes	dia. 5
Downward drainage holes	dia. 5 mm
C-C grid	25 x 25 mm
	3 kN / 100x100mm
	550 °C

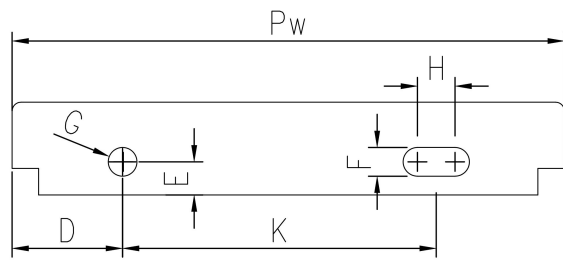
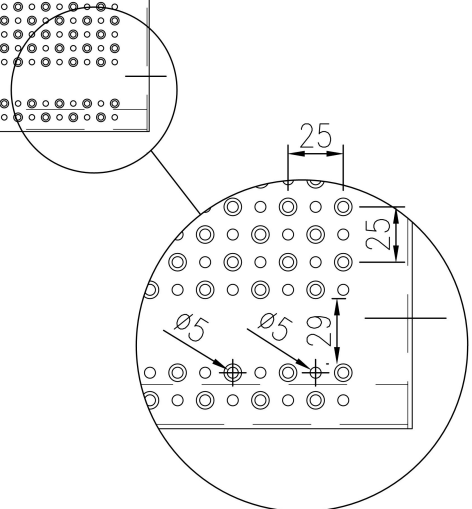
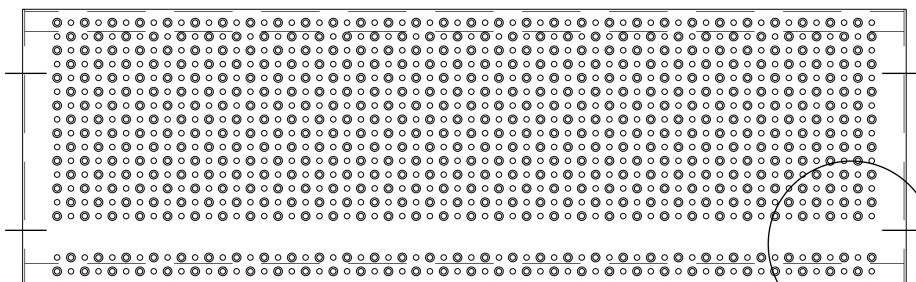
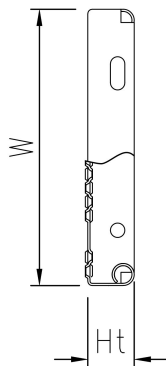
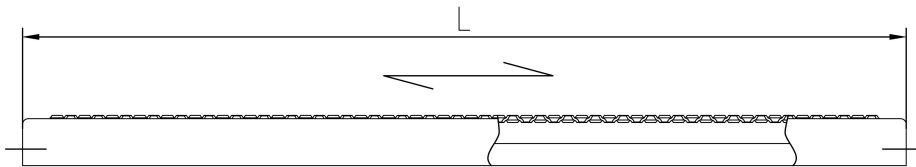
Suitable application areas

Standard dimensions

Length (mm)	Width (mm)	Height (mm)	Mat. thickness (mm)	Finish	Availability	Item number
800	275	45	2	Mill finish	Stock item	F100700100

End piece dimensions

Width (Pw) (mm)	Total height (Ht) (mm)	D (mm)	E (mm)	F (mm)	G (mm)	H (mm)	K (mm)
150		35	15	13	13	17	78
200		45	15	13	13	17	102
225		45	15	13	13	17	127
250		50	15	13	13	17	142
275		62	15	13	13	17	143
300		50	15	13	13	17	192



PcP Product name
OPTIMO Tread ACHIL VISUAL O5