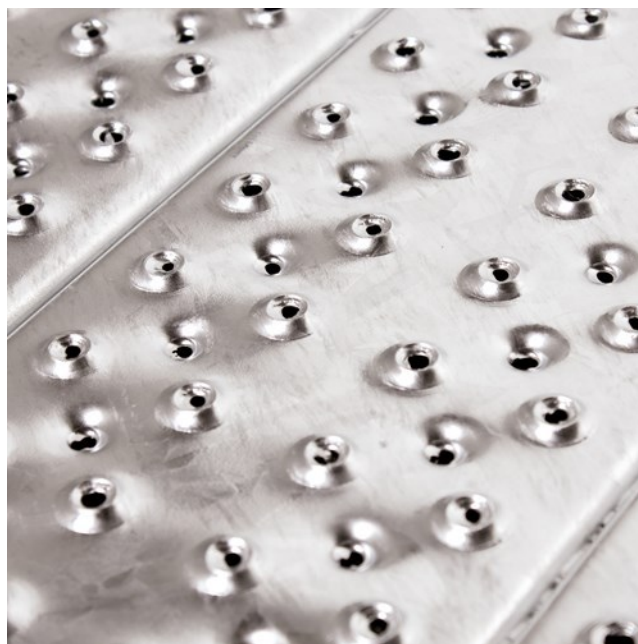




# Grating LHD

## Steel

Used in industrial applications as transformer platforms, offshore oil & natural gas drilling rigs requiring low hole density to limit the amount of oxygen and thus starve the source of the fire. Also used in public areas such as balconies. Tested and approved by SP Borås 2015. Safety grating Type LHD® is applied where a slip resistant and flame retardant surface is required - often on oil and gas rigs and trafo stations. Several tests proves that steel filters with LHD® gratings extinguishes oil fires significantly faster than traditional stone filters of macadam, pitl and stone. The surface pattern has less than five percent of air passage.



### Specifications

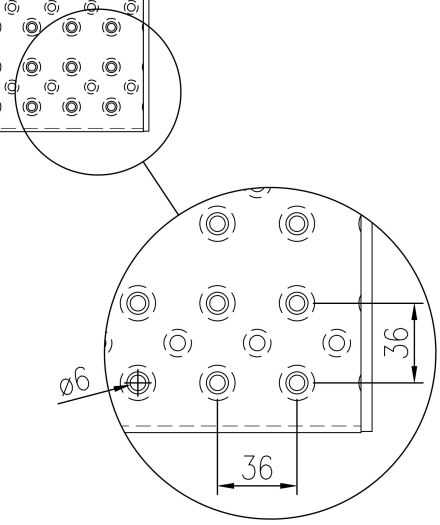
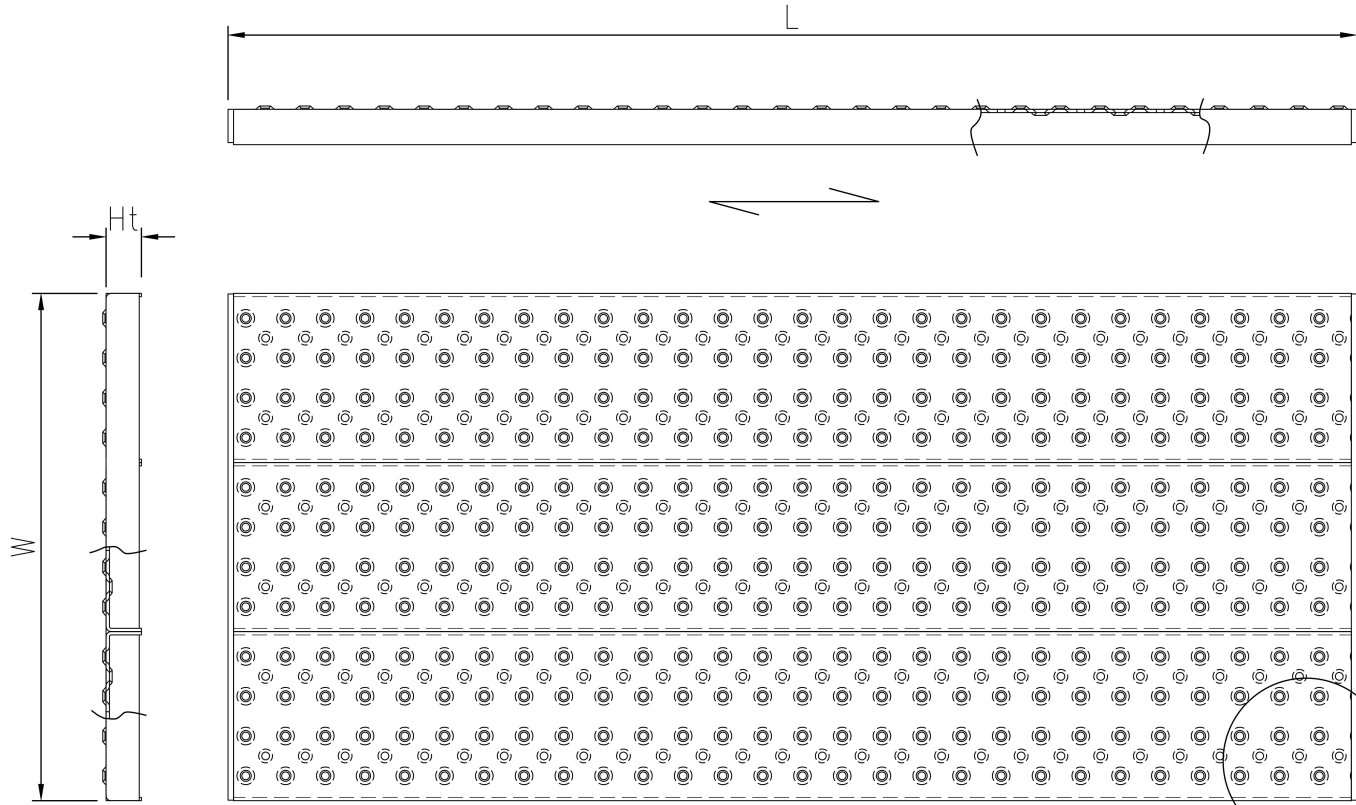
PTV guidelines	36+ Low Slip Potential acc. to BS 7976
Dry PTV average	91 multi-directional acc. to BS 7976
Wet PTV average	55 multi-directional acc. to BS 7976
Slip resistance	R11 = 27° > slope > 19° acc. to DIN 51130
Free area	2,4 - 3,7 %
Upward grip holes	dia. 6 mm
Downward drainage holes	dia. 6 mm
C-C grid	72 x 36 mm
Ball proof	15 mm in accordance with BS 4592 20 mm in accordance with BS 4592 35 mm in accordance with BS 4592
Fire resistance Critical temperature	550 °C

### Suitable application areas

Transformer station bunds







**PcP** Product name  
OPTIMO Plank Grating LHD