



# Trin ACHIL 02

Aluminium 3005-16 H66



## Specifikationer

Skridsikkerhed	R13 = hældning >35° iht. DIN 51130
Flange design	Achil [ b ]
Friareal	20-25 %
Optrækshuller	ø9 mm
Drænhuller	ø5 mm
C-C grid	25 x 25 mm
Lastkapacitet	1,5 kN / 100 x 100 mm iht. EN ISO 14122

## Egnede anvendelsesområder

Ligeløbstrapper

## Relaterede produkter

---

Rist 02

---

### Standard dimensioner

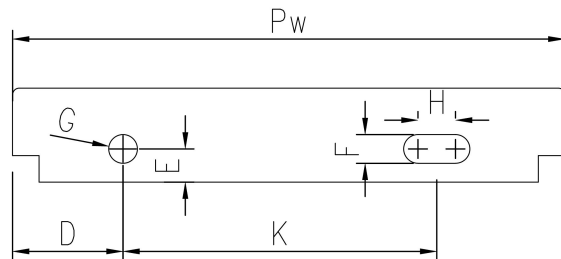
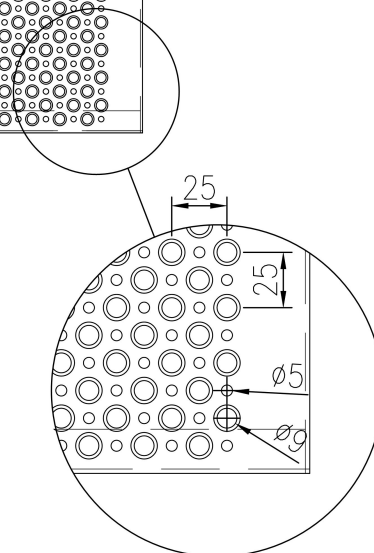
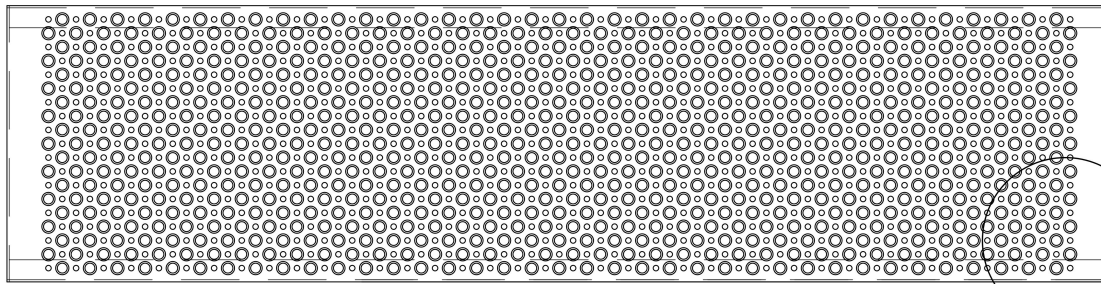
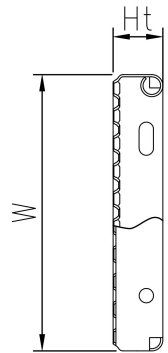
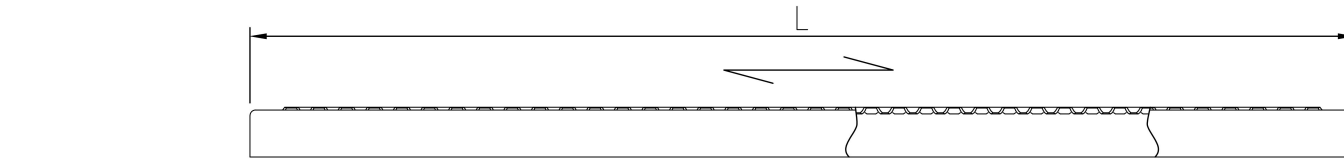
L (mm)	B (mm)	H (mm)	T (mm)	Overfladebehandling	Lagerstatus	Varenr.
600	200	58	2,5	Ubehandlet	Lagervare	F100796100
600	200	58	2,5	Vasket	Lagervare	F100796160
800	250	58	2,5	Vasket	Lagervare	F100876160
700	225	45	2,5	Vasket	Lagervare	F102176160

### Andre tilgængelige materialer

---

Stål 240 YP

---



**PcP**

Product name  
OPTIMO Tread ACHIL O2