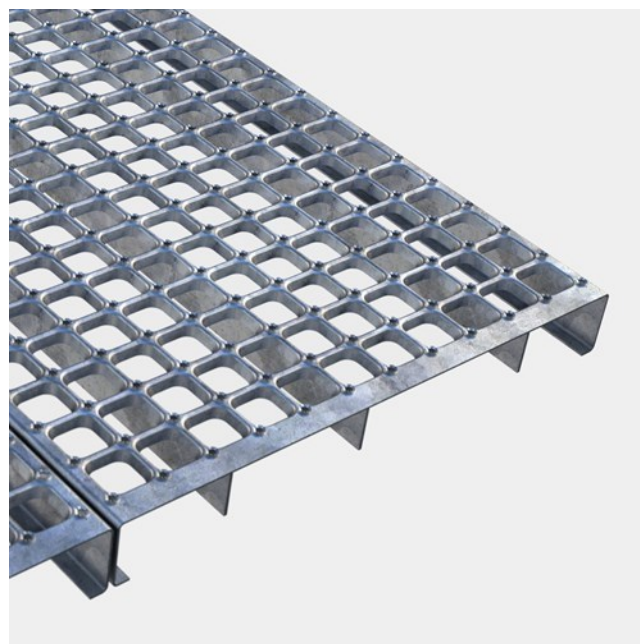




Plank Oyster

Steel 240 YP

Designed for simplicity & efficiency. You can easily make cut-outs on-site or let us help you customise your project. We supply various fixing clamps and kick flats for platforms and walkways. Punched hole mesh grating CUBE® has a very high strength compared to the weight ratio due to the unique cold-formed design. CUBE gratings, panels and stair treads comply to the European Industrial standard EN ISO 14122-2 for a concentrated load of min. 1.5 kN on 200x200 mm and to BS 4592 Part 0: 2006 +A1: 2012. The CUBE® (oyster) punched hole mesh gratings are tested according to DIN 51130 and BS 7976-2 2002 for slip resistance. The CUBE gratings and stair treads are quick and easy to install. The CUBE® gratings are 35 mm ball-proof according to EN ISO 14122-2 and comply to BS 4592 Part 0: 2006 +A1: 2012



Specifications

PTV guidelines	36+ Low Slip Potential acc. to BS 7976
Dry PTV average	104 multi-directional acc. to BS 7976
Wet PTV average	70 multi-directional acc. to BS 7976
Slip resistance	R13 = slope >35° acc. to DIN 51130
Free area	50-56 %
Upward grip holes	Oyster - serrated dia 6,5 mm
Downward drainage holes	34x34 mm
C-C grid	43,5 x 43,5 mm
Load capacity	1,5 kN / 200 x 200 mm acc. to EN ISO 14122
Ball proof	35 mm in accordance with BS 4592
Flange design	Bend [L]
Fire resistance Critical temperature	550 °C

Suitable application areas

Access Walkways & Maintenance Platforms



PcP. Gratings Ltd.
Enterprise Drive, Four Ashes, Wolverhampton, WV10 7DF

+44 1902 791 792
sales@pcp-corp-co.uk

Standard dimensions

Length (mm)	Width (mm)	Height (mm)	Thickness (mm)	Finish	Availability	Item No.
4000	500	42	2	Mill Finish	Stock item	C050400100
4000	500	42	2	Hot-dip galvanised EN 1461	On request	C050400101