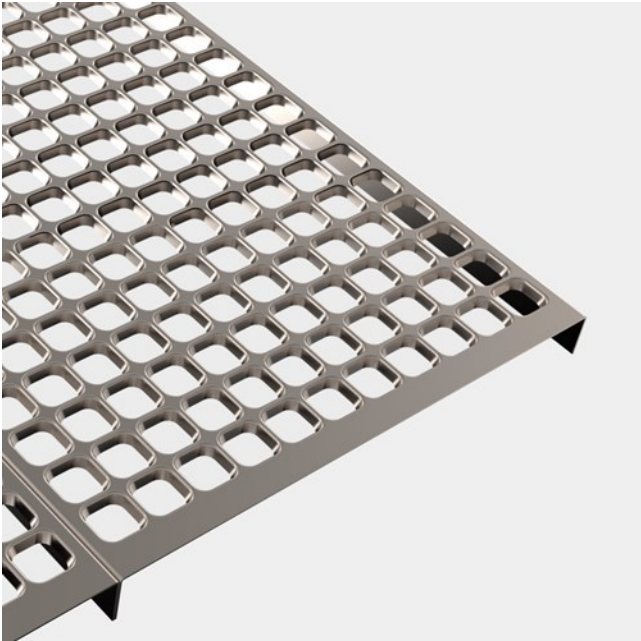




Plank grating Plain

Stainless steel

Punched hole mesh gratings CUBE™ Plain™ has a high strength-to-weight ratio which means that strength is maintained while weight is reduced. The greater the span, the lower is the weight – in relation to pressure-locked mesh gratings. CUBE™ Plain™ mesh gratings are recommended in industries where hygiene and high air- or liquid flow are required.



Specifications

Free area	50-56 %
Downward drainage holes	34x34 mm
C-C grid	43,5 x 43,5 mm
Ball proof	35 mm in accordance with BS 4592

Suitable application areas

Ventilation



Featured cases

Ceiling coverings - Hising Bridge - Gothenburg, Sweden

Related products

Plank grating Oyster

Plank grating Dimple

Plank grating Round

Other materials available

Steel 240 YP