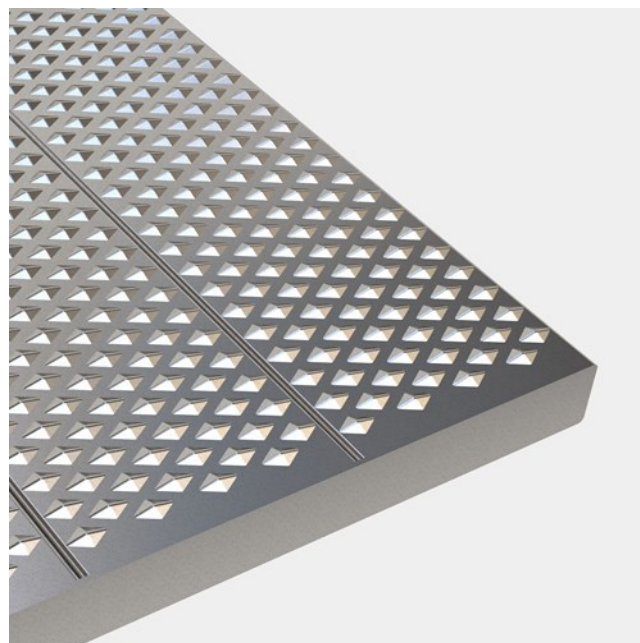




Plank grating E

Stainless steel

OPTIMO™ E Plank Gratings are identified by the raised surface without holes. Type E is used where no drainage required. E is a strong and slip resistant alternative to Durbar chequer plate, the planks are welded together to form modules to suit your support arrangement, subject to your clear span and loading consideration.



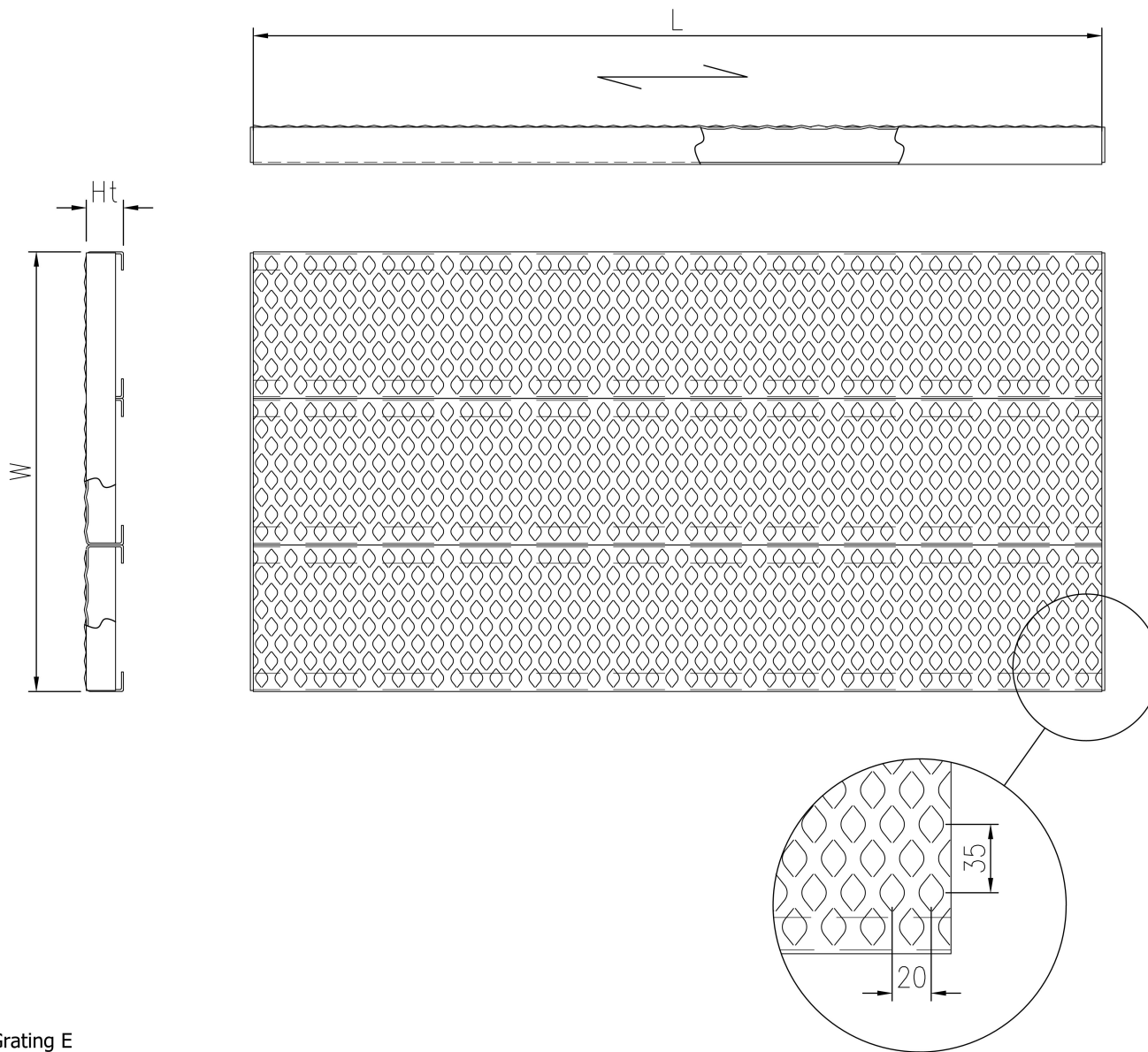
Specifications

Displacement space	V10 acc. to DIN 51130
Heel proof	
Closed surface	
Slip resistance	R9 = 10° > slope > 6° acc. to DIN 51130
Free area	~0 %
C-C grid	35 x 20 mm
Ball proof	15 mm in accordance with EN ISO 14122-2 20 mm in accordance with EN ISO 14122-2 35 mm in accordance with EN ISO 14122-2

Other materials available

Steel

Aluminium 3005-16 H66



Product name
OPTIMO Plank Grating E