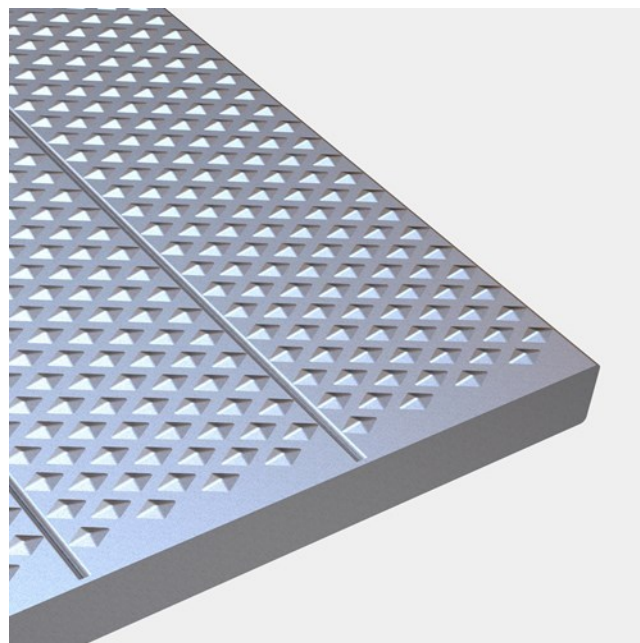




# Plank grating E

## Aluminium

Planks and safety gratings type E are identified by the raised surface without holes. Type E is a strong and slip resistant alternative to floor plates. (Chequer plate)  
The planks may be used either as individual elements or welded to gratings.



### Specifications

Displacement space	V10 acc. to DIN 51130
Heel proof	
Closed surface	
Slip resistance	R9 = 10° > slope > 6° acc. to DIN 51130
Free area	~0 %
C-C grid	35 x 20 mm
Ball proof	15 mm in accordance with EN ISO 14122-2 20 mm in accordance with EN ISO 14122-2 35 mm in accordance with EN ISO 14122-2

**Other materials available**

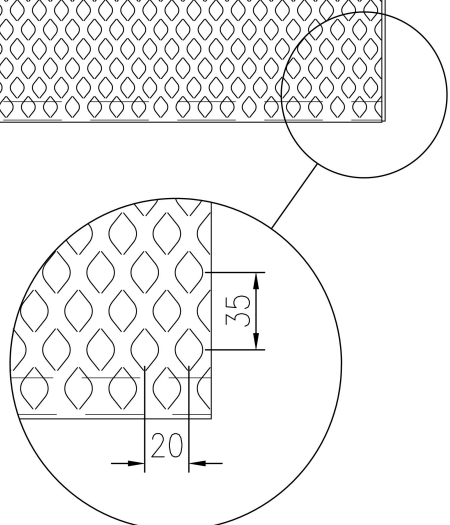
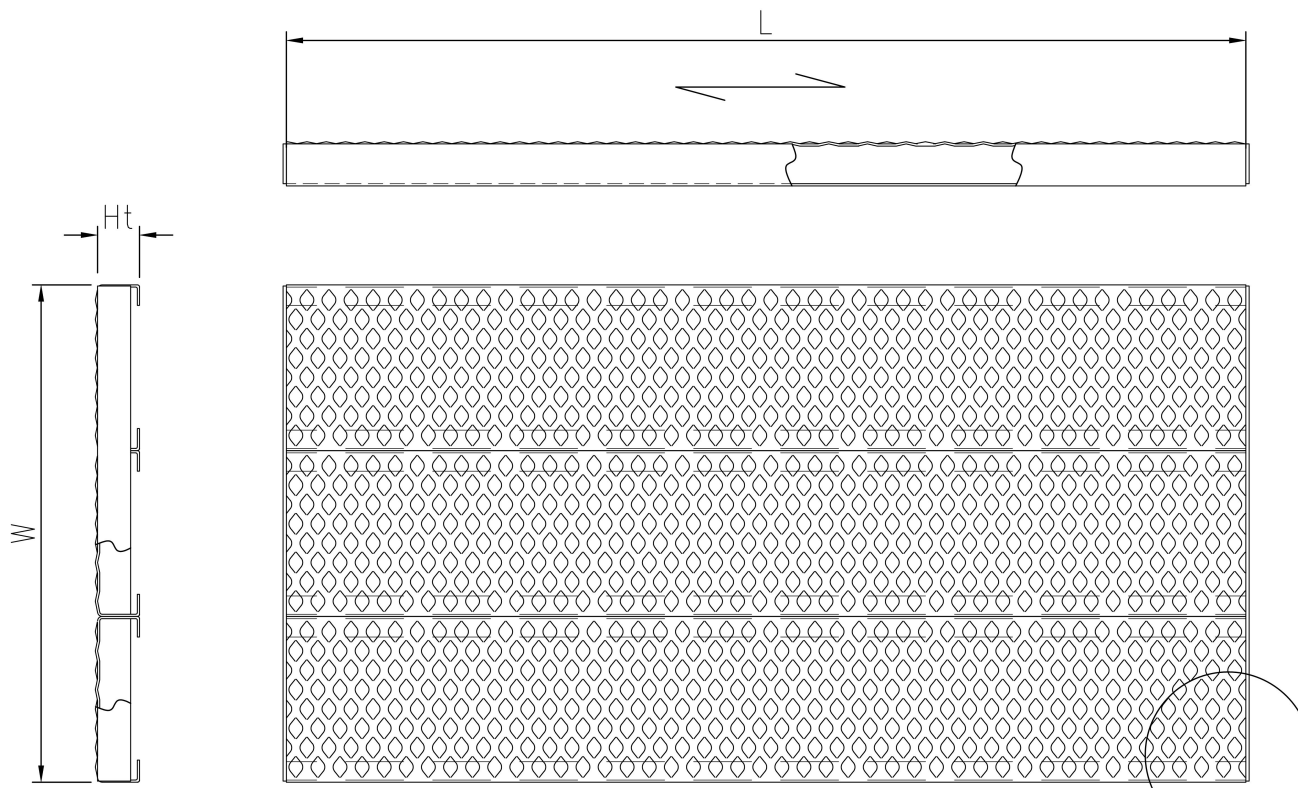
---

Steel

---

Stainless steel

---



**PcP** Product name  
OPTIMO Plank Grating E