



# Tread ACHIL VISUAL 05

## Steel 240 YP

PcP Type 05V Achil treads are manufactured in pattern type 05 with a visible sight strip on nosing for typical light duty access and occasional maintenance / service access. These treads are designed for applications where smaller holes are required and consideration should be made to safety stiletto heels and slip resistance. Treads are available in steel with galvanised finish as standard and all popular sizes are generally available from stock.



### Specifications

PTV guidelines	36+ Low Slip Potential acc. to BS 7976
Dry PTV average	96 multi-directional acc. to BS 7976
Wet PTV average	79 multi-directional acc. to BS 7976
Slip resistance	R13 = slope >35° acc. to DIN 51130
Heel proof	
Free area	8-9 %
Upward grip holes	dia. 5 mm
Downward drainage holes	dia. 5 mm
C-C grid	25 x 25 mm
	3 kN / 100x100mm
Fire resistance Critical temperature	550 °C

### Suitable application areas

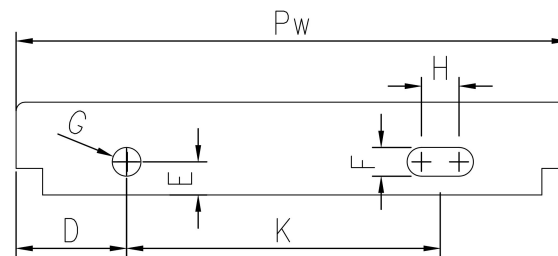
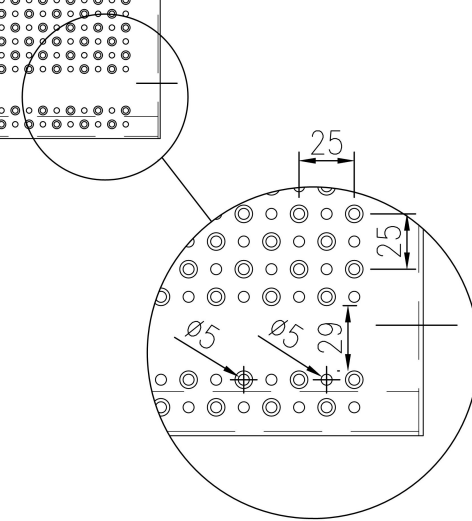
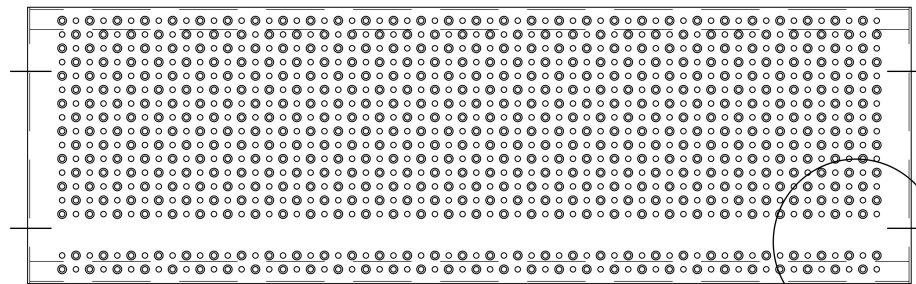
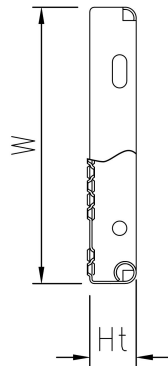
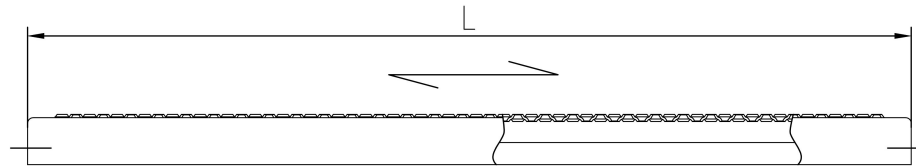


## Standard dimensions

Length (mm)	Width (mm)	Height (mm)	Thickness (mm)	Finish	Item No.
800	275	45	2	Hot-dip galvanised EN 1461	F100700101
900	275	45	2	Hot-dip galvanised EN 1461	F100710101
1000	275	45	2	Hot-dip galvanised EN 1461	F100720101
1200	275	58	2	Hot-dip galvanised EN 1461	F100730101
1500	275	58	2	Hot-dip galvanised EN 1461	F100740101
1000	300	45	2	Hot-dip galvanised EN 1461	F100980101
800	250	45	2	Hot-dip galvanised EN 1461	F100690101
800	250	45	2	Mill Finish	F100690100

## End piece dimensions

Width (Pw) (mm)	Total height (Ht) (mm)	D (mm)	E (mm)	F (mm)	G (mm)	H (mm)	K (mm)
150		35	15	13	13	17	78
200		45	15	13	13	17	102
225		45	15	13	13	17	127
250		50	15	13	13	17	142
275		62	15	13	13	17	143
300		50	15	13	13	17	192



**PcP** Product name  
OPTIMO Tread ACHIL VISUAL O5