



Tread ACHIL 02

Aluminium 3005-16 H66



Specifications

PTV guidelines	36+ Low Slip Potential
Dry PTV average	66
Wet PTV average	50
Slip resistance	R13 = slope >35° acc. to DIN 51130
Displacement space	V10 acc. to DIN 51130
Flange design	Achil [b]
Free area	20-25 %
Upward grip holes	dia. 9
Downward drainage holes	dia. 5 mm
C-C grid	25 x 25 mm
Load capacity	1,5 kN / 100 x 100 mm acc. to EN ISO 14122

Suitable application areas

Straight staircases

Related products

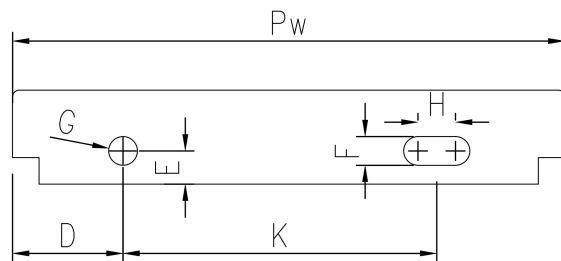
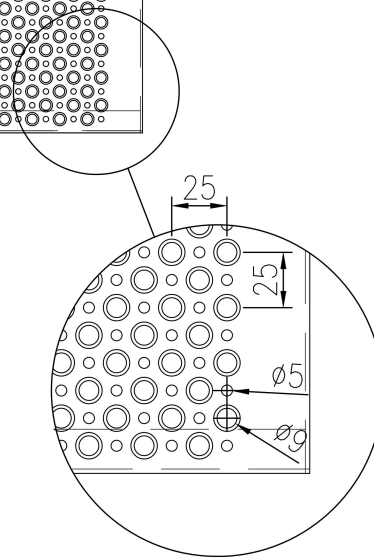
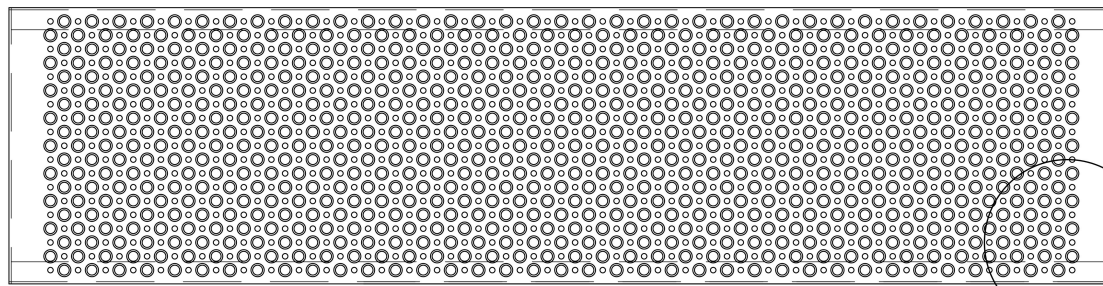
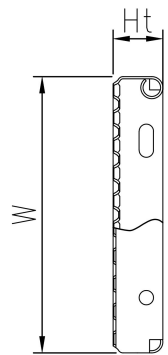
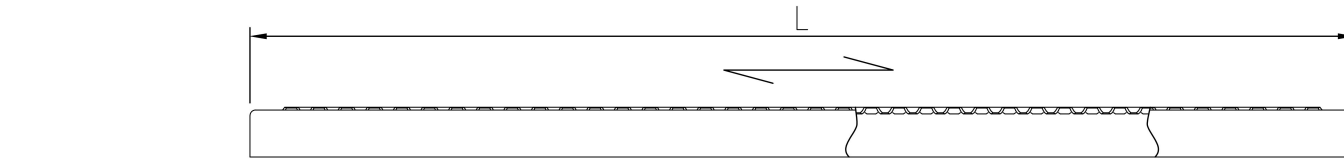
Plank grating 02

Standard dimensions

Length (mm)	Width (mm)	Height (mm)	Mat. thickness (mm)	Finish	Availability	Item number
600	200	58	2.5	Mill finish	Stock item	F100796100
600	200	58	2.5	Washed	Stock item	F100796160
800	250	58	2.5	Washed	Stock item	F100876160
700	225	45	2.5	Washed	Stock item	F102176160

Other materials available

Steel 240 YP



PcP

Product name
OPTIMO Tread ACHIL O2