



Tread ACHIL 02

Steel 240 YP

Classified in the highest anti-slip class R13 according to DIN 51130. Upwards punched holes and downwards drain holes ensure drainage of liquids so that the surface is dry and non-slip. The rolled flanges provides the stair tread a high load capacity, while protecting footwear and sharp edges are avoided. The tread comes with bolt holes in end pieces for mounting on the stringers.



Specifications

PTV guidelines	36+ Low Slip Potential acc. to BS 7976
Dry PTV average	66 multi-directional acc. to BS 7976
Wet PTV average	50 multi-directional acc. to BS 7976
Slip resistance	R13 = slope >35° acc. to DIN 51130
Flange design	Achil [b]
Free area	20-25 %
Upward grip holes	dia. 9 mm
Downward drainage holes	dia. 5 mm
C-C grid	25 x 25 mm
Designed in accordance with	BS 4592
	3 kN / 100x100mm
Fire resistance Critical temperature	550 °C

Suitable application areas

Straight staircases

Featured cases

Platforms and stairs for grand stand systems - Germany

Public stairs, landings and walkways - HMS Gallipoli - Portsmouth, England

Walkways and stairways - ImageWharf - Amsterdam, Netherlands

Related products

Tread Plank ACHIL O2

Plank O2

Plank Grating O2

Tread ACHIL VISUAL O2

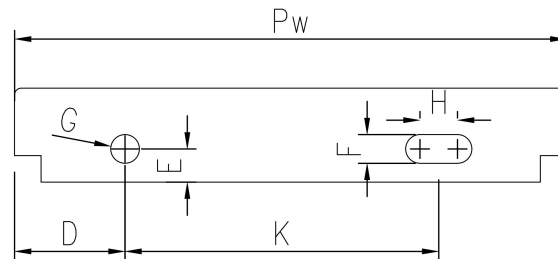
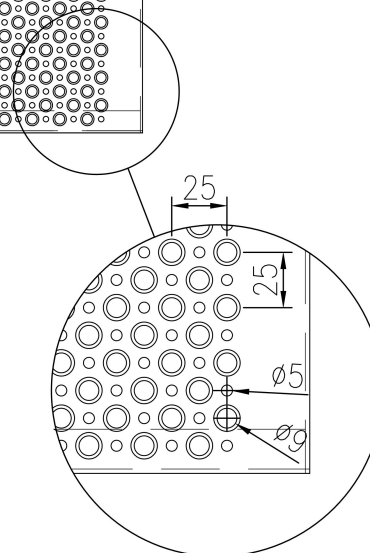
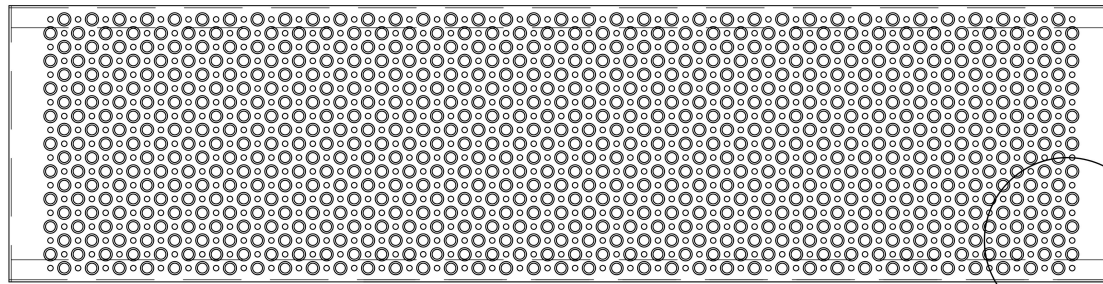
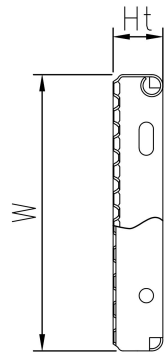
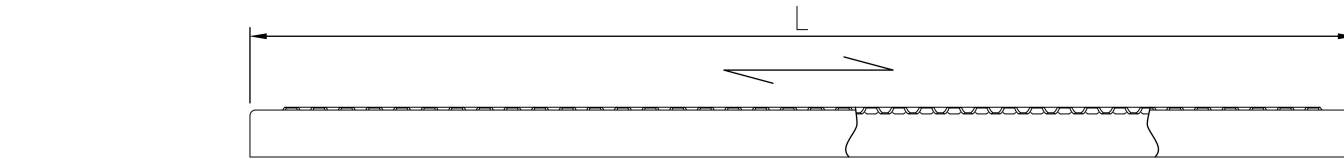
Standard dimensions

Length (mm)	Width (mm)	Height (mm)	Thickness (mm)	Finish	Weight (kg)	Availability	Item No.
500	150	45	2	Hot-dip galvanised EN 1461	2.70	Stock item	F100010101
600	150	45	2	Hot-dip galvanised EN 1461	3.20	Stock item	F100020101
700	150	45	2	Mill Finish	3.70	On request	F100030100
700	150	45	2	Hot-dip galvanised EN 1461	3.70	On request	F100030101
800	150	45	2	Hot-dip galvanised EN 1461	4.20	On request	F100040101
900	150	45	2	Hot-dip galvanised EN 1461	4.70		F100050101
1000	150	45	2	Hot-dip galvanised EN 1461	5.10	On request	F100060101
1100	150	58	2	Hot-dip galvanised EN 1461	5.80		F100070101
1200	150	58	2	Hot-dip galvanised EN 1461	6.30		F100080101
1300	150	58	2	Hot-dip galvanised EN 1461	6.80		F100090101
1500	150	58	2	Hot-dip galvanised EN 1461	7.90		F100100101
400	200	45	2	Hot-dip galvanised EN 1461	2.60		F100110101
500	200	45	2	Hot-dip galvanised EN 1461	3.10	On request	F100120101
600	200	45	2	Hot-dip galvanised EN 1461	3.70	Stock item	F100130101
700	200	45	2	Hot-dip galvanised EN 1461	4.20		F100140101
800	200	45	2	Hot-dip galvanised EN 1461	4.80	On request	F100150101
900	200	45	2	Hot-dip galvanised EN 1461	5.30		F100160101
1000	200	45	2	Hot-dip galvanised EN 1461	5.90		F100170101
1100	200	58	2	Hot-dip galvanised EN 1461	7.10		F100180101
1200	200	58	2	Hot-dip galvanised EN 1461	7.70	Stock item	F100190101
1500	200	58	2	Hot-dip galvanised EN 1461	9.40		F100200101
400	225	45	2	Hot-dip galvanised EN 1461	2.80		F100210101
500	225	45	2	Hot-dip galvanised EN 1461	3.30	On request	F100220101
600	225	45	2	Mill Finish	3.90	On request	F100230100
600	225	45	2	Hot-dip galvanised EN 1461	3.90	Stock item	F100230101
700	225	45	2	Hot-dip galvanised EN 1461	4.50	On request	F100240101
800	225	45	2	Hot-dip galvanised EN 1461	5.10	On request	F100250101
900	225	45	2	Hot-dip galvanised EN 1461	5.70		F100260101
1000	225	45	2	Hot-dip galvanised EN 1461	6.20		F100270101
1100	225	58	2	Hot-dip galvanised EN 1461	7.50		F100280101
1200	225	58	2	Hot-dip galvanised EN 1461	8.10		F100290101
1500	225	58	2	Hot-dip galvanised EN 1461	10.00		F100300101
500	250	45	2	Hot-dip galvanised EN 1461	3.60	On request	F100310101
600	250	45	2	Hot-dip galvanised EN 1461	4.20	Stock item	F100320101
700	250	45	2	Mill Finish	4.80	On request	F100330100
700	250	45	2	Hot-dip galvanised EN 1461	4.80	On request	F100330101

800	250	45	2	Hot-dip galvanised EN 1461	5.40	Stock item	F100340101
900	250	45	2	Hot-dip galvanised EN 1461	6.00	Stock item	F100350101
1000	250	45	2	Hot-dip galvanised EN 1461	6.60	Stock item	F100360101
1100	250	58	2	Hot-dip galvanised EN 1461	7.90		F100370101
1200	250	58	2	Hot-dip galvanised EN 1461	8.20	Stock item	F100380101
1300	250	58	2	Hot-dip galvanised EN 1461	8.60		F100390101
1500	250	58	2	Hot-dip galvanised EN 1461	10.50		F100400101
600	275	45	2	Hot-dip galvanised EN 1461	4.40	Stock item	F100410101
700	275	45	2	Mill Finish	5.00	On request	F100420100
700	275	45	2	Hot-dip galvanised EN 1461	5.00	On request	F100420101
800	275	45	2	Mill Finish	5.70	On request	F100430100
800	275	45	2	Hot-dip galvanised EN 1461	5.70	Stock item	F100430101
900	275	45	2	Mill Finish	6.30	On request	F100440100
900	275	45	2	Hot-dip galvanised EN 1461	6.30	Stock item	F100440101
1000	275	45	2	Hot-dip galvanised EN 1461	7.00	Stock item	F100450101
1100	275	58	2	Hot-dip galvanised EN 1461	8.30	Stock item	F100460101
1200	275	58	2	Hot-dip galvanised EN 1461	9.00	Stock item	F100470101
1300	275	58	2	Hot-dip galvanised EN 1461	9.40		F100480101
1500	275	58	2	Hot-dip galvanised EN 1461	11.10		F100490101
600	300	45	2	Hot-dip galvanised EN 1461	4.60	On request	F100500101
700	300	45	2	Hot-dip galvanised EN 1461	5.30		F100510101
800	300	45	2	Mill Finish	6.00	On request	F100520100
800	300	45	2	Hot-dip galvanised EN 1461	6.00	On request	F100520101
900	300	45	2	Mill Finish	6.70	On request	F100530100
900	300	45	2	Hot-dip galvanised EN 1461	6.70	Stock item	F100530101
1000	300	45	2	Hot-dip galvanised EN 1461	7.40	Stock item	F100540101
1100	300	58	2	Hot-dip galvanised EN 1461	8.70		F100550101
1200	300	58	2	Hot-dip galvanised EN 1461	9.40	On request	F100560101
1300	300	58	2	Mill Finish	9.90	On request	F100570100
1500	300	58	2	Hot-dip galvanised EN 1461	11.60	On request	F100580101
1300	300	58	2	Hot-dip galvanised EN 1461	9.90		F100570101
400	150	45	2	Hot-dip galvanised EN 1461	2.20		F100000101

End piece dimensions

Width (Pw) (mm)	Total height (Ht) (mm)	D (mm)	E (mm)	F (mm)	G (mm)	H (mm)	K (mm)
150		35	15	13	13	17	78
200		45	15	13	13	17	102
225		45	15	13	13	17	127
250		50	15	13	13	17	142
275		62	15	13	13	17	143
300		50	15	13	13	17	192



Product name
OPTIMO Tread ACHIL O2