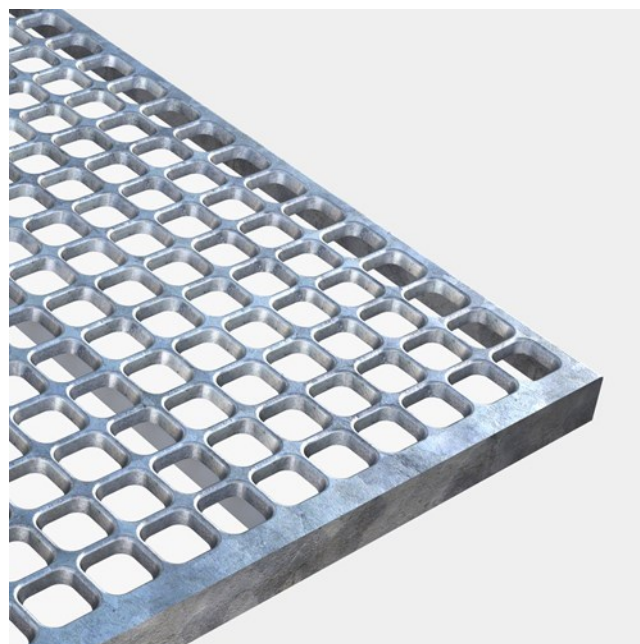




# Plank grating Plain

## Steel 240 YP

Punched hole mesh gratings CUBE™ has a high strength-to-weight ratio which means that strength is maintained while weight is reduced. The greater the span, the lower is the weight – in relation to pressure-locked mesh gratings. The CUBE™ grating can be produced in three design variants depending on how much slip resistance is needed. CUBE™ mesh gratings are recommended in most constructions and industries where high air- or liquid flow are required.



### Specifications

Free area	50-56 %
Downward drainage holes	34x34 mm
C-C grid	43,5 x 43,5 mm
Ball proof	35 mm in accordance with BS 4592
Fire resistance Critical temperature	550 °C

**Accessories**

---

Fixing Clip, Upper Part MA44/Cube

---

Fixing Clip, Lower Part

---

**Related products**

---

Fixing Clip, Upper Part MA44/Cube

---

Fixing Clip, Lower Part

---

Plank grating Oyster

---

Plank grating Dimple

---

Plank grating Round

---

**Other materials available**

---

Stainless steel

---