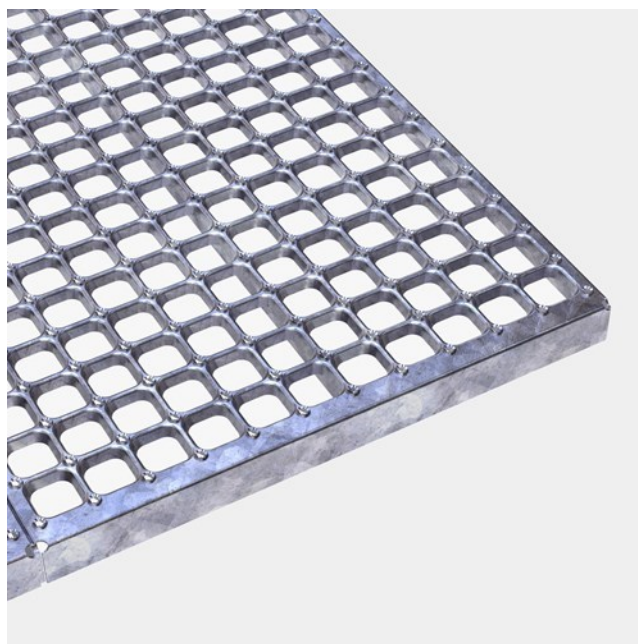




Plank grating Oyster

Steel 240 YP

Punched hole mesh gratings CUBE™ has a high strength-to-weight ratio which means that strength is maintained while weight is reduced. The greater the span, the lower is the weight – in relation to pressure-locked mesh gratings. The CUBE™ grating can be produced in three design variants depending on how much slip resistance is needed. CUBE® mesh gratings are recommended in most constructions and industries where high air- or liquid flow are required.



Specifications

PTV guidelines	36+ Low Slip Potential acc. to BS 7976
Dry PTV average	104 multi-directional acc. to BS 7976
Wet PTV average	70 multi-directional acc. to BS 7976
Slip resistance	R13 = slope >35° acc. to DIN 51130
Free area	50-56 %
Upward grip holes	Oyster - serrated dia 6,5 mm
Downward drainage holes	34x34 mm
C-C grid	43,5 x 43,5 mm
Load capacity	1,5 kN / 200 x 200 mm acc. to EN ISO 14122
Ball proof	35 mm in accordance with BS 4592
Fire resistance Critical temperature	550 °C

Suitable application areas

Access Walkways & Maintenance Platforms

Landings



Featured cases

Maintenance walkway - Heathrow Park - London, England

Maintenance platforms and stairs - Air BP Jet Fuel Station - Dals-Långed, Sweden

Accessories

Fixing Clip, Upper Part MA44/Cube

Fixing Clip, Lower Part

Related products

Fixing Clip, Upper Part MA44/Cube

Fixing Clip, Lower Part

Plank grating Plain

Plank grating Dimple

Plank grating Round

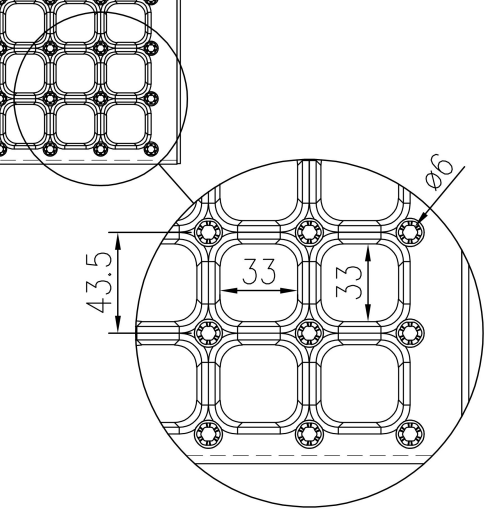
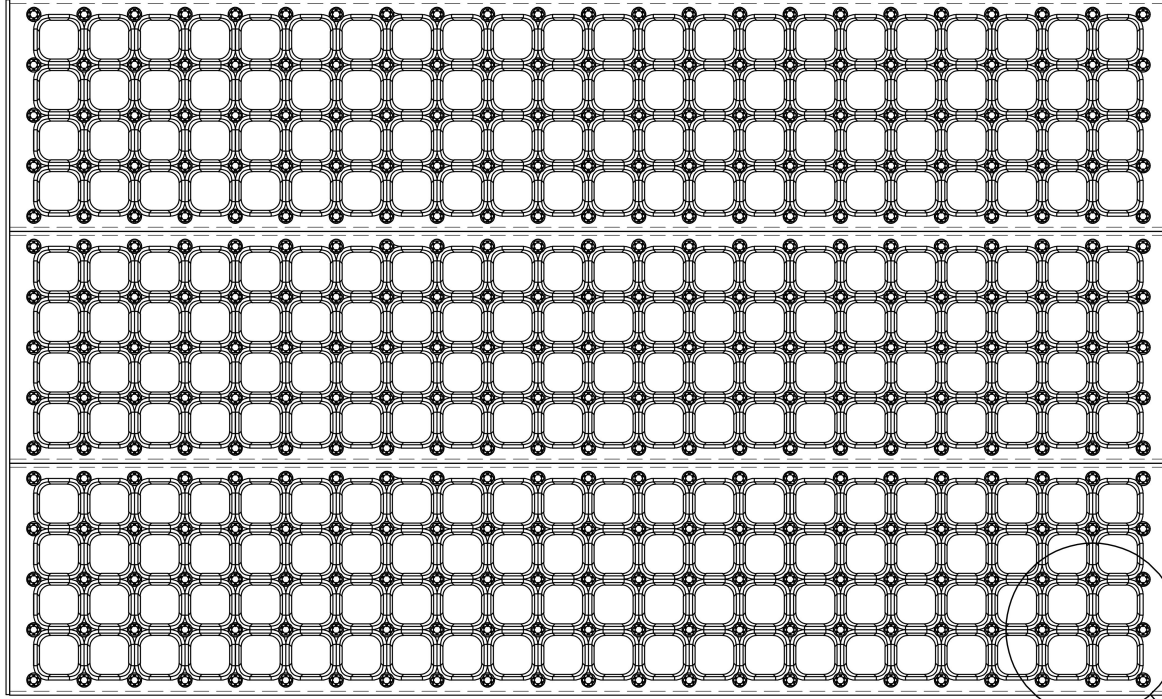
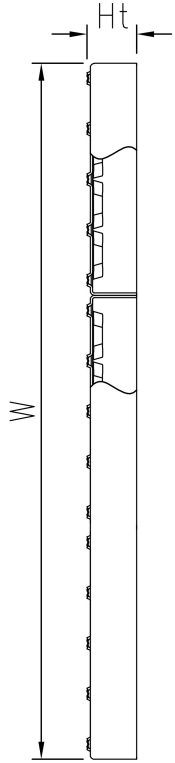
Tread Oyster

Standard dimensions

Length (mm)	Width (mm)	Height (mm)	Thickness (mm)	Finish	Item No.
600	1000	42	2	Hot-dip galvanised EN 1461	F004000101
800	1000	42	2	Hot-dip galvanised EN 1461	F004010101
1000	1000	42	2	Hot-dip galvanised EN 1461	F004020101

Other materials available

Stainless steel



PCP Product name
CUBE Plank Grating Oyster